

Operational Programme Research, Development and Education (OP RDE) & Smart Specialization (RIS3)

PhDr., Mgr. Václav Velčovský, Ph.D.

Deputy minister

EU Operational programmes Section (MEYS)

Date: March 3rd 2016

Event: Synergies between European Structural and Investment Funds (ESIF)
& Research and Innovation Funding: The Stairway to Excellence

<http://www.msmt.cz/strukturalni-fondy/op-vvv>



EVROPSKÁ UNIE
Evropské strukturální a investiční fondy
Operační program Výzkum, vývoj a vzdělávání



MINISTERSTVO ŠKOLSTVÍ,
MLÁDEŽE A TĚLOVÝCHOVY

Introduction to OP RDE



EVROPSKÁ UNIE
Evropské strukturální a investiční fondy
Operační program Výzkum, vývoj a vzdělávání



OP RDE – priority axes

PA1

Strengthening capacity
for high-quality
research

- **SO1** - Improving international quality of research and its results
- **SO2** - Building capacity and strengthening long-term co-operation of research organisations with the application sphere
- **SO3** - Improving infrastructure for research in education
- **SO4** - Improving strategic management of research at national level

PA2

Development of
universities and
human resources
for R&D

ESF

- **SO1** - Improving quality of education at universities and its relevance to needs of the labour market
- **SO2** - Increasing participation of students with special needs, from socio-economically disadvantaged groups and ethnic minorities in higher education, and decreasing student drop-out rates
- **SO3** - Improving the conditions for lifelong learning at higher education institutions
- **SO4** - Setting up and developing an evaluation system and ensuring the quality and strategic management of higher education institutions
- **SO5** - Improving conditions for education related to research and for the development of HR in R&D

ERDF

- **SO1** - Improving education infrastructure at higher education institutions in order to ensure a high quality of education, improving access for disadvantaged groups and increasing the openness of higher education institutions

PA3

Equal access to high-
quality pre-school,
primary and secondary
education

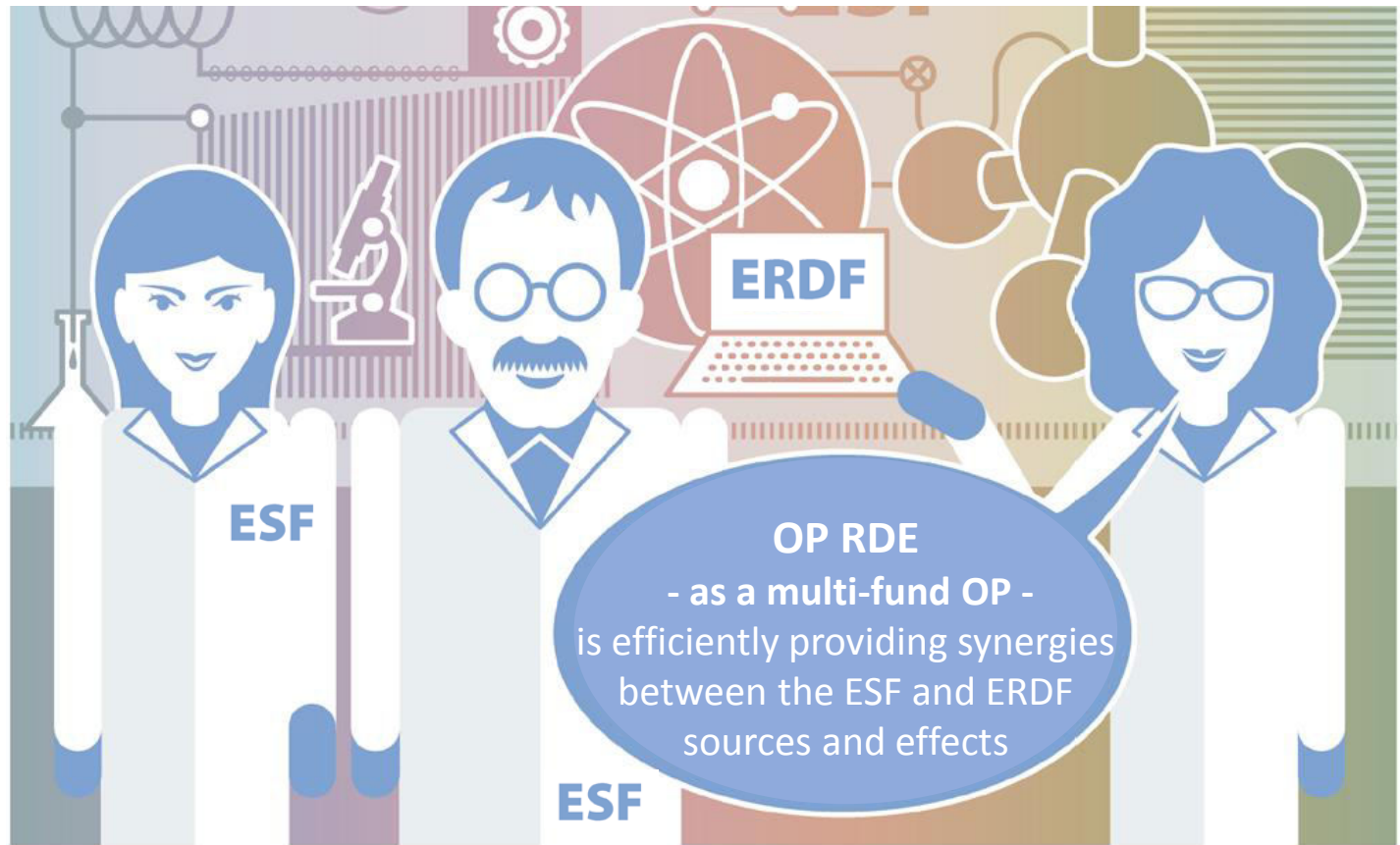
- 7 specific objectives across 3 investment priorities



EVROPSKÁ UNIE
Evropské strukturální a investiční fondy
Operační program Výzkum, vývoj a vzdělávání



Specific feature of OP RDE: ESF & ERDF synergies in R&D support

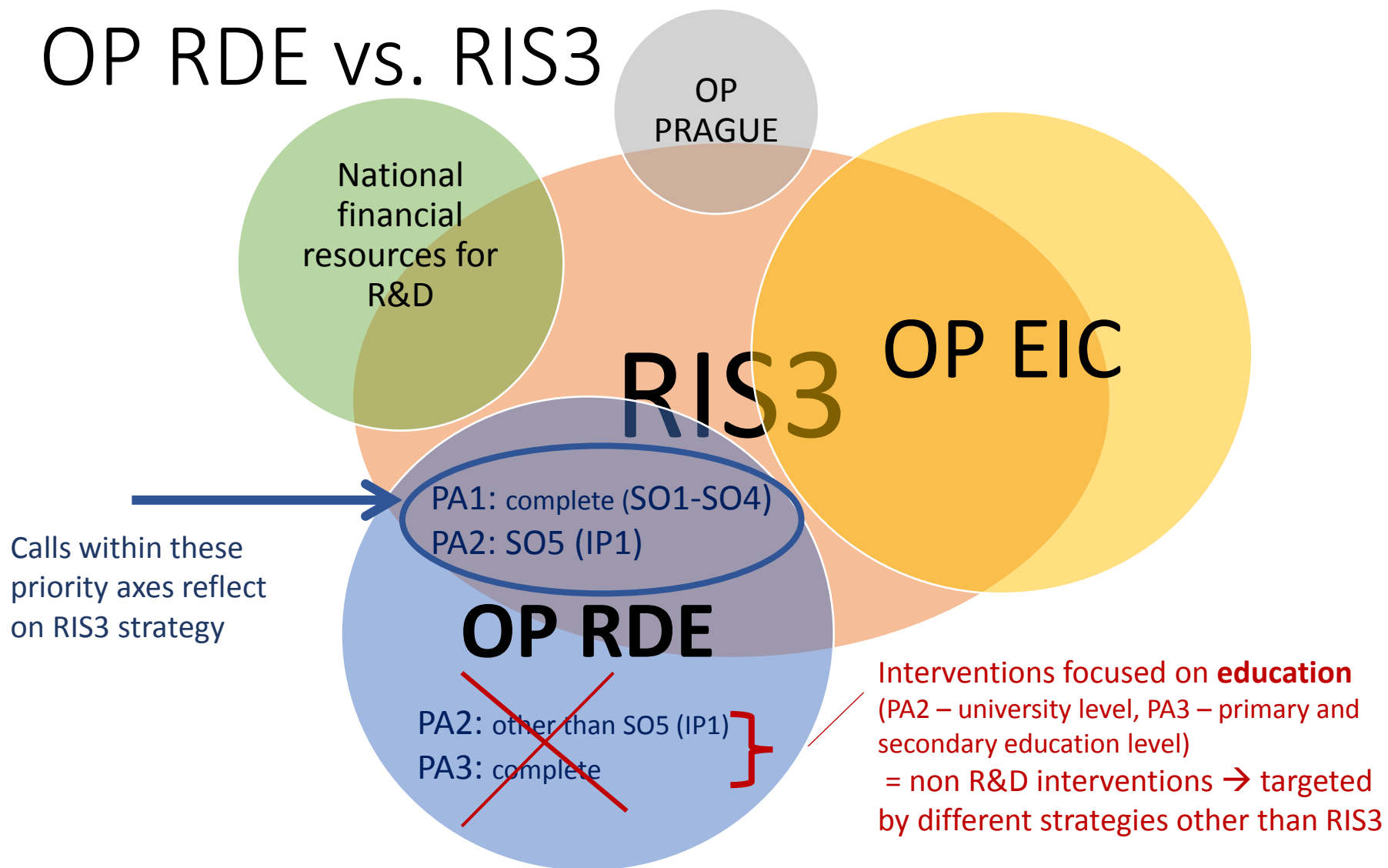


EVROPSKÁ UNIE
Evropské strukturální a investiční fondy
Operační program Výzkum, vývoj a vzdělávání



MINISTERSTVO ŠKOLSTVÍ,
MLÁDEŽE A TĚLOVÝCHOVY

OP RDE vs. RIS3



EVROPSKÁ UNIE
Evropské strukturální a investiční fondy
Operační program Výzkum, vývoj a vzdělávání



MINISTERSTVO ŠKOLSTVÍ,
MLÁDEŽE A TĚLOVÝCHOVY

PRIORITY AXIS 1: STRENGTHENING OF CAPACITIES FOR HIGH-QUALITY RESEARCH

PA1 – background information

- ✓ PA1 is financed by the **European Regional Development Fund**
- ✓ PA 1 significantly contributes to the implementation of one of the priorities of the **Europe 2020 Strategy**, “Smart Growth”
- ✓ Interventions in PA 1 are an essential tool for meeting the objectives in several key areas of changes of **RIS3 Strategy** (in Czech republic: The National Research and Innovation Strategy for Smart Specialisation of the Czech Republic and its regional annexes)



EVROPSKÁ UNIE
Evropské strukturální a investiční fondy
Operační program Výzkum, vývoj a vzdělávání



MINISTERSTVO ŠKOLSTVÍ,
MLÁDEŽE A TĚLOVÝCHOVY

SO 1 Enhancing of the international quality of research and its results

Aims at: Increasing the number or **high-quality research teams**, greater **openness and availability of R&D infrastructures** (including relevant infrastructural equipment)

The interventions will lead to the following:

- ✓ **Enhancement of the number of research teams** which will lead to high-quality research projects and quality research outputs.
- ✓ **Greater openness and availability of the R&D infrastructures** for research teams from other organizations conducting research, based on the transparent rules of the use of devices and equipment.
- ✓ **Strengthening of the interdisciplinarity** of performed research.



EVROPSKÁ UNIE
Evropské strukturální a investiční fondy
Operační program Výzkum, vývoj a vzdělávání



SO 2 Establishing of capacities and reinforcement of the long-term cooperation of research organizations with the application sector

Aims at: Formation of **interdisciplinary research teams**, conduction pre-application research in breaking areas, higher intensity of **long-term cooperation** with the application sector (including relevant infrastructural equipment)

The interventions will lead to the following:

- ✓ **Formation of interdisciplinary research teams conducting pre-application research in breaking areas.** Intensive research collaboration across disciplines and sectors.
- ✓ **Strengthening of the research** focus on societal challenges.
- ✓ **Increasing of the potential** for use of research results in practice.
- ✓ **Higher intensity of long-term cooperation** of research organizations with the application sector, mainly with the business



EVROPSKÁ UNIE
Evropské strukturální a investiční fondy
Operační program Výzkum, vývoj a vzdělávání



MINISTERSTVO ŠKOLSTVÍ,
MLÁDEŽE A TĚLOVÝCHOVY

SO 3 Improvement of the infrastructure for the research-educational purposes

Aims at: Readiness of infrastructure, area and material conditions for [the research-oriented study programmes](#)

The interventions will lead to the following:

- ✓ **Readiness of infrastructure, area and material conditions** for the research-focused study programs.
- ✓ **Improvement of students' interest in the research-oriented study programmes** through the improvement of conditions for the research-oriented education and better presumes for the subsequent employment in relevant sector.
- ✓ **Reaching of better research results** by the youngest researchers' generation thanks to the use of higher quality material and device equipment.



EVROPSKÁ UNIE
Evropské strukturální a investiční fondy
Operační program Výzkum, vývoj a vzdělávání



MINISTERSTVO ŠKOLSTVÍ,
MLÁDEŽE A TĚLOVÝCHOVY

SO 4 Improvement of the strategic research management at the national level

Aims at: Creation of stable and attractive environment for realization of high-quality research

The interventions will lead to the following:

- ✓ Creation of the framework for regular monitoring and evaluation of effectiveness of the research system and its individual elements, leading to the **creation of a stable and attractive environment for excellent research.**
- ✓ **Improvement of the access to necessary information sources** for researchers via their centralised accesibility.

SO 4 will be implemented by systemic projects.



EVROPSKÁ UNIE
Evropské strukturální a investiční fondy
Operační program Výzkum, vývoj a vzdělávání



PRIORITY AXIS 2: DEVELOPMENT OF HEIs AND HUMAN RESOURCES FOR R&D

- **The SO 5** is financed by **European Social Fund**
- **Aims at:** Improving conditions for education related to research and for the development of human resources in R&D
- The interventions will lead to the following:
 - ✓ Increase of **qualification of research, administrative and technical staff** in research organizations
 - ✓ Improvement of **quality and effectiveness of strategic management of research organizations**
 - ✓ Improvement of quality and **international overlap of research-oriented study programmes**
 - ✓ Influx of leading **experts from private sector and abroad** in public research



EVROPSKÁ UNIE
Evropské strukturální a investiční fondy
Operační program Výzkum, vývoj a vzdělávání



Basic framework for interventions in PA1 and PA2

- All the R&D project proposals must be in accordance with RIS3 Strategy
- **Duration of the projects**
 - ✓ PA 1 and PA2 - up to 5 years
- There is no limit for the number of project proposals submitted by one organization (with exceptions in specific calls for proposals)
- **Main supported beneficiaries**
 - ✓ Entities meeting the definition of an [organisation for research and dissemination of knowledge](#) in accordance with the Framework for State Aid for RDI
 - ✓ Other entities conducting research
 - ✓ State government institutions (and their subordinate organisations) – in case of systemic interventions (plus local government institutions and their subordinate organizations - in case of Smart accelerator call)
- Regulation of co-financing ESI Funds in programming period 2014 – 2020
 - ✓ Gives the minimal limits for **co-financing** projects by beneficiaries from their own economic activities (in case of Research organisations – min. 5%)



EVROPSKÁ UNIE
Evropské strukturální a investiční fondy
Operační program Výzkum, vývoj a vzdělávání



MINISTERSTVO ŠKOLSTVÍ,
MLÁDEŽE A TĚLOVÝCHOVY

Synergies/complementarities with Horizon 2020 and other R&D programmes

- ✓ OP RDE will support activities enhancing the capacity for involving Czech entities in projects under Pillar I of the **Horizon 2020** programme (Excellent Science), and **European aid grants** (i.e. European Research Council grants, Marie Skłodowska-Curie and for ERA Chairs projects)
 - Various tools under various SOs of OP RDE including **SMART ACCELERATOR**
 - **SMART ACCELERATOR** = Call in PA2 supporting **regional capacity for RIS3 management and implementation** including support given to **preparation of strategic projects** (projects usually prepared in some kind of strategic partnership of more actors or projects with a significantly positive impact on the region) to be submitted to various aid/ESIF programmes
- ✓ As of **synergies with other ESIF OPs**, there are various synergic activities mainly with:
 - **OP EIC**: OP RDE – enhancing capacities for strategic co-operation of public and private sector and supporting HR for R&D; OP EIC – supporting applied research and enhancing research capacity for industry needs) → **key synergies for RIS3**
 - **OP Prague**: synergies in both R&D and education areas (in OP RDE - interventions with broad national impact, in OP Prague – Prague-specific interventions with local impact
 - and others

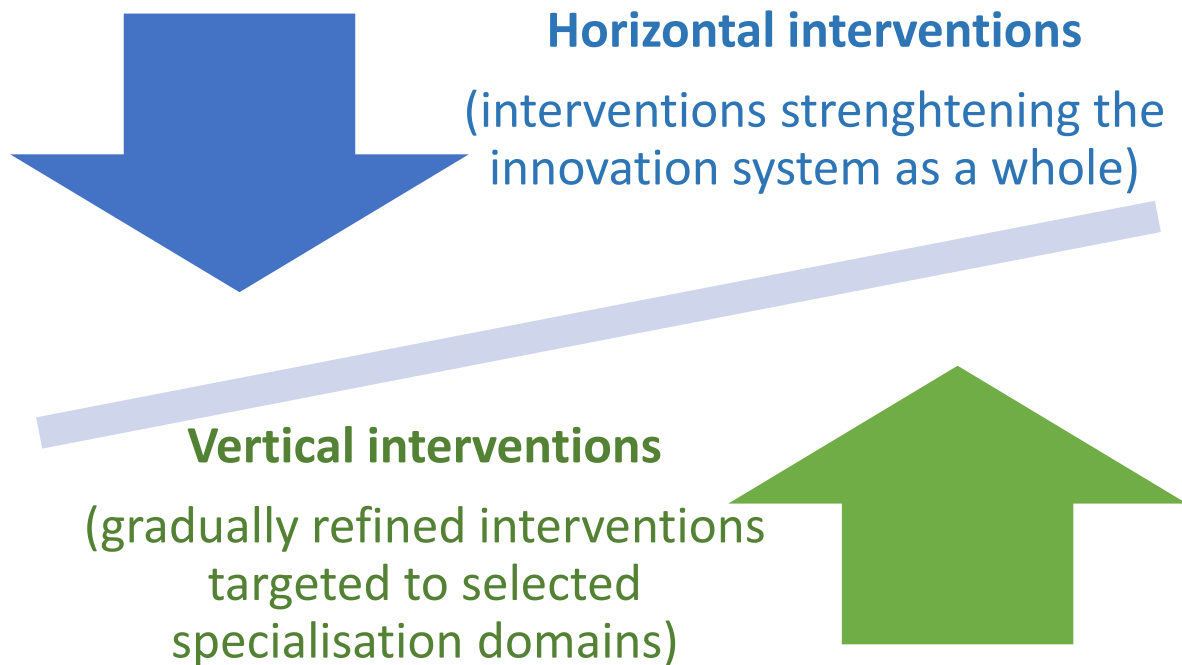


EVROPSKÁ UNIE
Evropské strukturální a investiční fondy
Operační program Výzkum, vývoj a vzdělávání



MINISTERSTVO ŠKOLSTVÍ,
MLÁDEŽE A TĚLOVÝCHOVY

RIS3 approach to prioritization progress in time



- ✓ Horizontality or verticality of interventions (on the level of model-activities aiming to fulfill the set RIS3 targets) are indicated in the National RIS3



EVROPSKÁ UNIE
Evropské strukturální a investiční fondy
Operační program Výzkum, vývoj a vzdělávání



MINISTERSTVO ŠKOLSTVÍ,
MLÁDEŽE A TĚLOVÝCHOVY

OP RDE vs. RIS3 – general approach

- **Gradual increase of verticalized interventions** (calls) and decrease of horizontal calls in time
 - In the closest years (starting point) OP RDE strictly follows guidelines given by the National RIS3 → verticalization is applied only to calls matching „model activities/interventions“ indicated as vertical in the strategy; the rest is kept as horizontal as of now.
- **Gradual refining of focus of interventions** – based on the EDP gradually refining the vertical topics.
- **Different approach** to application of verticalization matrix – **based on type of intervention.**

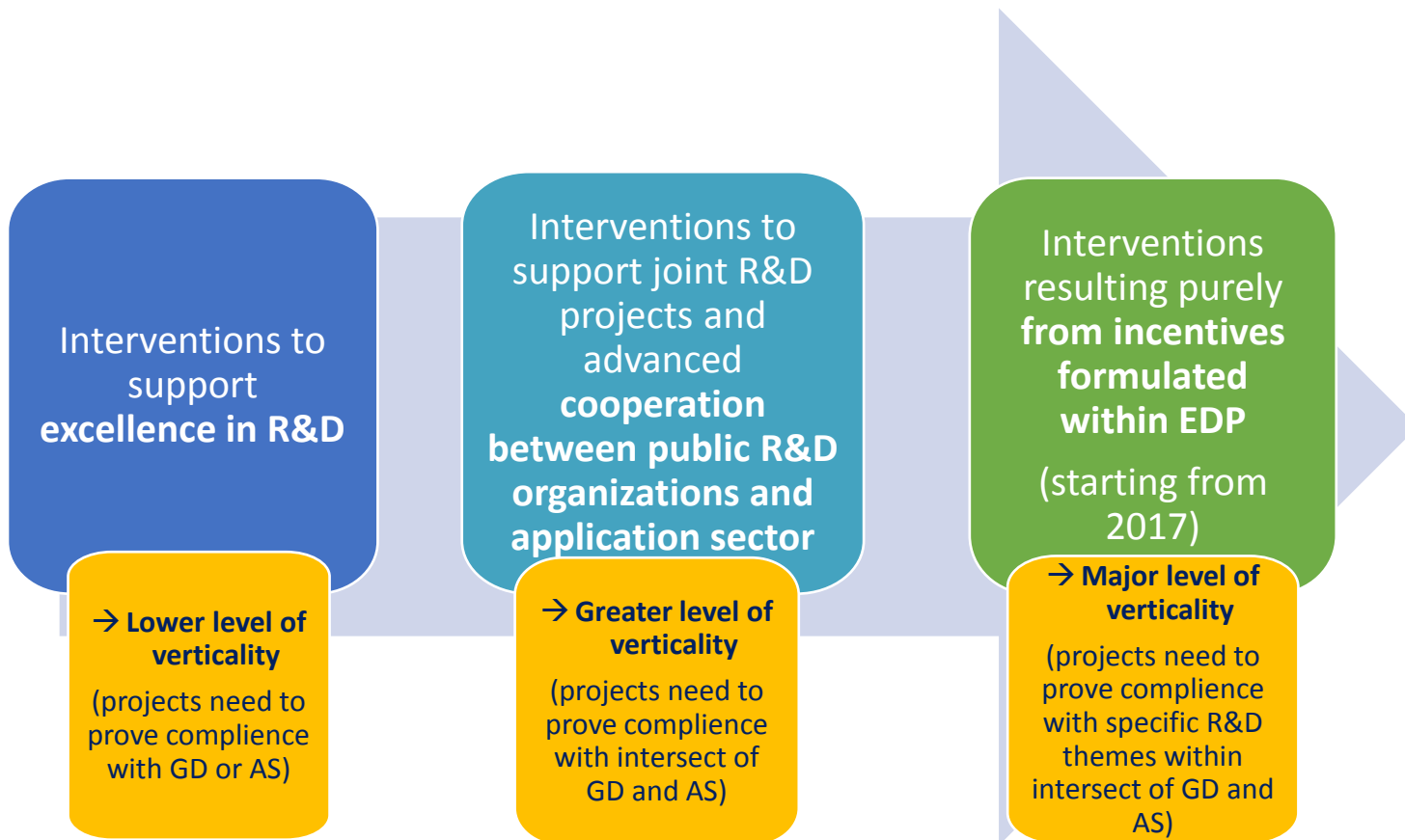


EVROPSKÁ UNIE
Evropské strukturální a investiční fondy
Operační program Výzkum, vývoj a vzdělávání



MINISTERSTVO ŠKOLSTVÍ,
MLÁDEŽE A TĚLOVÝCHOVY

OP RDE approach to RIS3 verticalization (in relevant SOs)



EVROPSKÁ UNIE
Evropské strukturální a investiční fondy
Operační program Výzkum, vývoj a vzdělávání



MINISTERSTVO ŠKOLSTVÍ,
MLÁDEŽE A TĚLOVÝCHOVY

OP RDE – priority axes

PA1

Strengthening capacity
for high-quality
research

- **SO1** - Improving international quality of research and its results → **VERTICAL (rows or collumns)**
- **SO2** - Building capacity and strengthening long-term co-operation of research organisations with the application sphere → **VERTICAL (intersects of rows and collumns)**
- **SO3** - Improving infrastructure for research in education → **VERTICAL (rows or collumns)**
- **SO4** - Improving strategic management of research at national level → **HORIZONTAL**

PA2

Development of
universities and
human resources
for R&D

ESF

- **SO1** - Improving quality of education at universities and its relevance to needs of the labour market → **non RIS3 (targeted by university strategies)**
- **SO2** - Increasing participation of students with special needs, from socio-economically disadvantaged groups and ethnic minorities in higher education, and decreasing student drop-out rates → **non RIS3 (targeted by university strategies)**
- **SO3** - Improving the conditions for lifelong learning at higher education institutions → **non RIS3 (targeted by university strategies)**
- **SO4** - Setting up and developing an evaluation system and ensuring the quality and strategic management of higher education institutions → **non RIS3 (targeted by university strategies)**
- **SO5** - Improving conditions for education related to research and for the development of HR in R&D → **devided in 2 parts:**
 - ESF calls complementary to ERDF calls for universities in SO3 PA1 → **VERTICAL (rows or collumns) & targeted by university strategies**
 - ESF calls to support of human resources for R&D → **HORIZONTAL**

ERDF

- **SO1** - Improving education infrastructure at higher education institutions in order to ensure a high quality of education, improving access for disadvantaged groups and increasing the openness of higher education institutions → **non RIS3 (targeted by university strategies)**

PA3

Equal access to high-
quality pre-school,
primary and secondary
education

- 7 specific objectives across 3 investment priorities



EVROPSKÁ UNIE
Evropské strukturální a investiční fondy
Operační program Výzkum, vývoj a vzdělávání



MINISTERSTVO ŠKOLSTVÍ,
MLÁDEŽE A TĚLOVÝCHOVY

OP RDE – current state of affairs

- ✓ Since July 2015 until now, 11 calls in PA1 and PA 2 were already opened (3 in 2015, 8 in 2016) → 6 calls verticalized, 3 horizontal – all in line with RIS3

Call no.	Call	Priority axis/ thematic objective/ investment priority/ specific objective	Call type	Allocation	Call open until	Open/closed/ planned	RIS3 relevant yes/no	RIS3 horizontal/ vertical intervention*
02_15_008	Phased projects	PA1 TO1 IP1 SO1	Continuous	3 200 000 000 Kč	15.6.2016	closed	yes	V (GD or AS)
02_16_019	Excellent research	PA1 TO1 IP1 SO1	Single-round	6 000 000 000 Kč	10.6.2016	open	yes	V (GD or AS)
02_15_003	Excellent research teams	PA1 TO1 IP1 SO1	Single-round	2 500 000 000 Kč	22.1.2016	closed	yes	V (GD)
02_15_006	Teaming	PA1 TO1 IP1 SO1	Continuous	2 600 000 000 Kč	31.10.2016	open	yes	H
02_16_017	Infrastructures for research-oriented education (building completion or modernization)	PA1 TO1 IP1 SO3	Single-round	3 500 000 000 Kč	1.9.2016	open	yes	V (GD or AS)
02_16_013	Research infrastructures	PA1 TO1 IP1 SO1	Single-round	4 000 000 000 Kč	2.6.2016	open	yes	V (GD or AS)
02_16_015	ESF call for universities	PA2 TO10 IP2 SO1, 2, 4	Single-round	3 500 000 000 Kč	31.8.2016	open	no	-
02_16_016	ERDF call for universities	PA2 TO10 IP2 SO1	Single-round	10 000 000 000 Kč	31.8.2016	open	no	-
02_15_004	Smart Accelerator	PA2 IP1 SO5	Continuous	650 000 000 Kč	30.6.2016	open	yes	H (similar to systemic intervention)
02_16_018	Research-oriented study programmes	PA2 IP1 SO5	Single-round	550 000 000 Kč	2.9.2016	open	yes	V (GD or AS)
02_16_014	Building of expert capacities - technology transfer	PA2 IP1 SO5	Single-round	450 000 000 Kč	17.3.2016	open	yes	H

*NOTE: V= vertical; H= horizontal; GD= generic domains (RIS3 rows of vert. matrix); AS= application sectors(columns of vert. matrix)



EVROPSKÁ UNIE
Evropské strukturální a investiční fondy
Operační program Výzkum, vývoj a vzdělávání



Planned calls (to be open in 2016)

Call	Priority axis/ thematic objective/ investment priority/ specific objective	Call type	Allocation	Planned opening of the call	Open/closed /planned	RIS3 relevant yes/no	RIS3 horizontal /vertical intervention PROPOSAL → only INDICATIVE!
Strategic management of R&D&I on the national level	PA1 TO1 IP1 SO4	Continuous	1 500 000 000 Kč	5.16	planned	yes	H (systemic intervention – IPS)
Pre-application phase R&D projects	PA1 TO1 IP1 SO2	Single-round	700 000 000 Kč	6.16	planned	yes	V (intersect of GD and AS)
Long-term interdisciplinary/intersectorial cooperation	PA1 TO1 IP1 SO2	Single-round	1 000 000 000 Kč	6.16	planned	yes	V (intersect of GD and AS)
International mobility	PA2 TO1 IP1 SO5	Single-round	300 000 000 Kč	12.16	planned	yes	H (possible V for part of the call)
Development of capacities for R&D	PA2 TO1 IP1 SO5	Single-round	660 000 000 Kč	5.16	planned	yes	H
Intersectoral mobility	PA2 TO1 IP1 SO5	Single-round	300 000 000 Kč	12.16	planned	yes	H (possible V for part of the call)
Support to students with special needs	PA2 TO1 IP1 SO2	Single-round	300 000 000 Kč	9.16	planned	no	-
Life-long learning programmes on universities	PA2 TO1 IP1 SO3	Single-round	200 000 000 Kč	9.16	planned	no	-

*NOTE: V= vertical; H= horizontal; GD= generic domains (RIS3 rows of vert. matrix); AS= application sectors(columns of vert. matrix)



EVROPSKÁ UNIE
Evropské strukturální a investiční fondy
Operační program Výzkum, vývoj a vzdělávání



Thank you for your attention...



EVROPSKÁ UNIE
Evropské strukturální a investiční fondy
Operační program Výzkum, vývoj a vzdělávání

